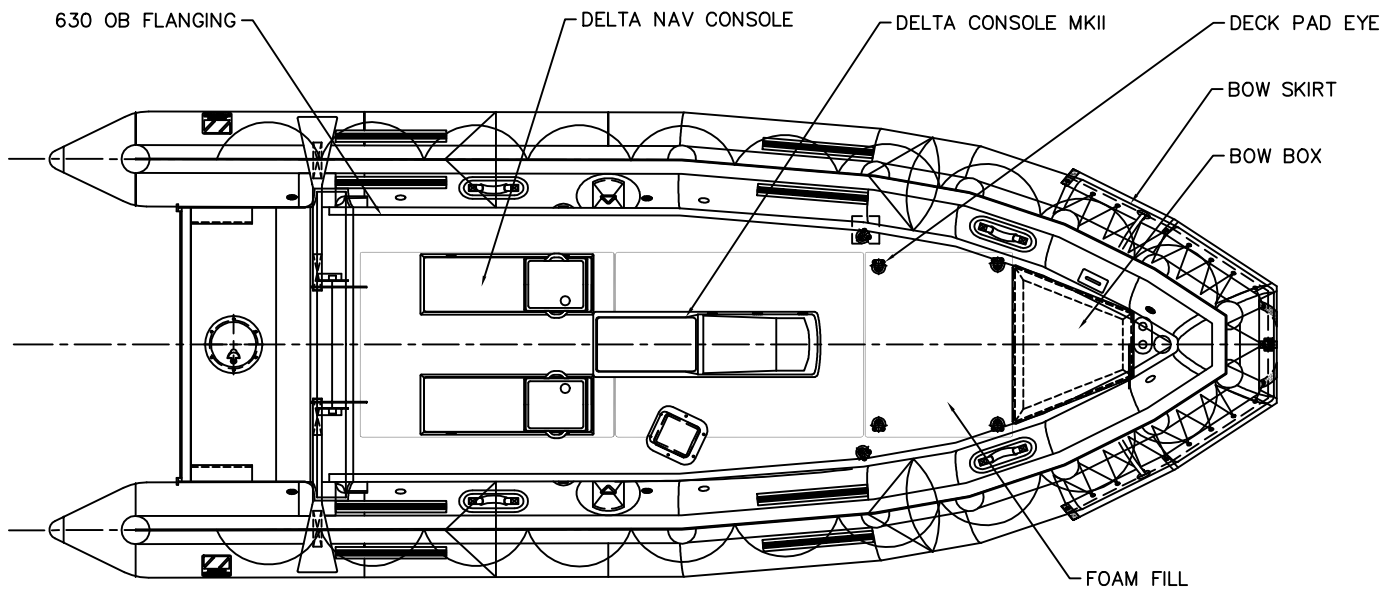
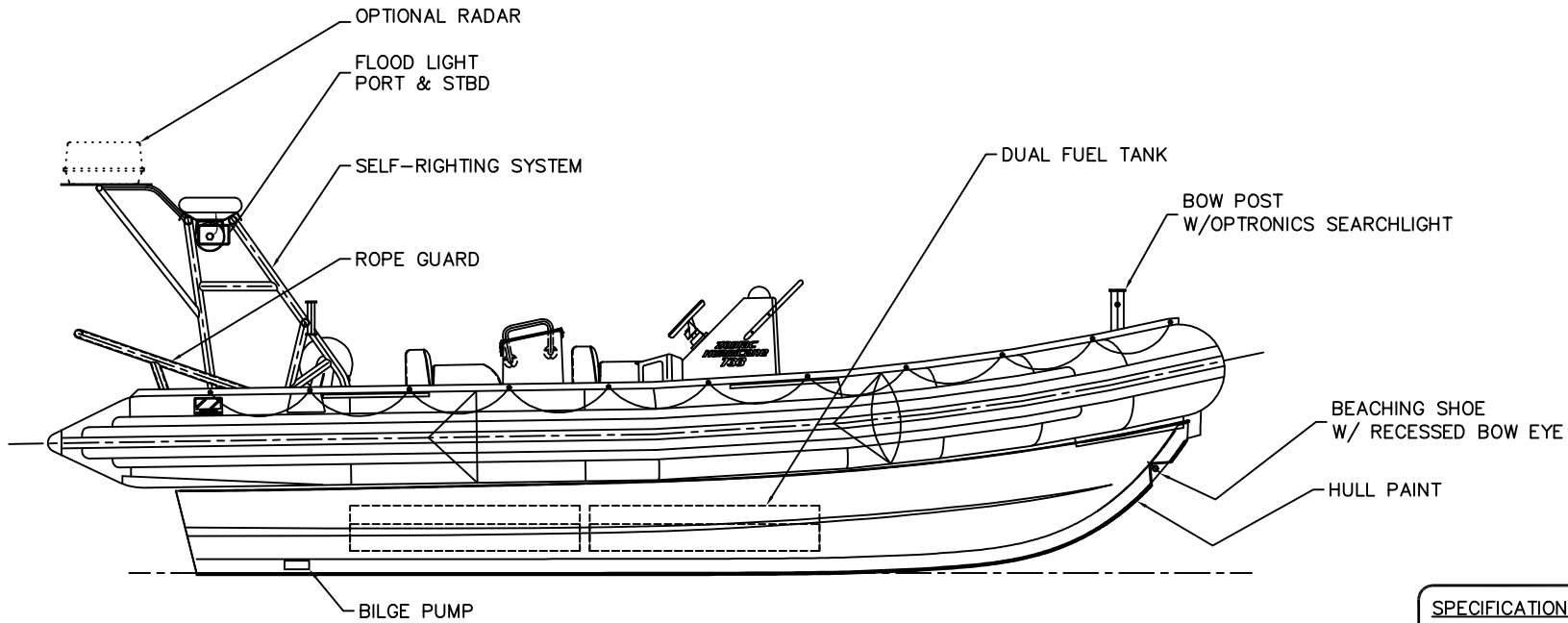




H660 OB SAR



SPECIFICATIONS:

LENGTH OVERALL	22' (6.7m)
LENGTH RIGID HULL	19.5' (5.94m)
BEAM MAX	8.5' (2.59m)
BEAM RIGID HULL	6.17' (1.89m)
HORSEPOWER MAX	200 HP MAX
TUBE DIAMETER	20" (508mm)
NUMBER OF AIR CHAMBERS	5
FUEL CAPACITY (MAIN)	48 US GAL (181 L)
FUEL CAPACITY (RESERVE)	48 US GAL (181 L)
WEIGHT	3100 lbs (1409 Kg)

THIS DRAWING SHALL REMAIN THE PROPERTY OF ZODIAC HURRICANE TECHNOLOGIES INC. AND IS SUBJECT TO RECALL AT ANY TIME. MATERIAL DESCRIBED HEREIN OR PARTS THEREOF MAY NOT BE REPRODUCED, USED, MANUFACTURED OR PUBLISHED WITHOUT WRITTEN PERMISSION FROM ZODIAC HURRICANE TECHNOLOGIES INC.